

DESIGNED

for **Stability**

for **Robust connections**

for **Ease of placement**

for **A comfortable experience**

& **Tested for trust**

& **Manufactured in India with Pride**



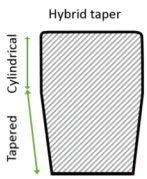
BEYOND PRODUCT

Our highly experienced team, led by dentists and engineers have ensured that we provide an implant system, that guarantees patient and dentist satisfaction.

Using the gold standard in materials - High strength medical grade Titanium alloy - Ti6Al4V, incorporating features and unique design elements, and providing prosthodontic solutions to meet all your patient needs, we make sure that your implant experience is comfortable, easy and simply the best.

ReFirm Implant systems are made in India with passion and pride. This along with the incorporation of latest proven developments in implantology and its novel features makes it a frontier leading product.

Designed for Stability

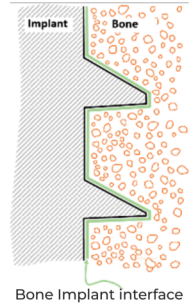


Hybrid taper design: Both Cylinder and Taper

Hybrid taper design, while allowing for easy placement, doesn't compromise with lateral stability, due to cylindrical profile at the cortical region

Optimized Thread design

The patented thread design with optimal thread spacing (pitch) and root width, allows for maximum Bone Implant interface, yet ensuring adequate thread engagement with soft cancellous bone giving the desired final torque during placement. Furthermore, thread flank angles are designed for optimal load resolution, resulting in better transfer of load and longevity of the implant.

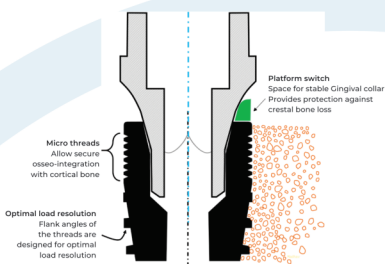
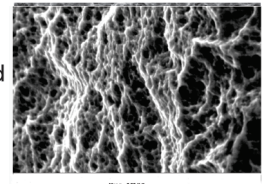


Micro-threads at collar

Micro-threads at the cortical collar of the implant allows for more secure osseointegration of implant with cortical bone at this critical section and reduced shear stresses in the peri-implant bone, thus aiding in lowering the bone resorption levels in the area.

Surface characterization

The micro surface treatment that includes sand blasting and acid etching on the machined titanium alloy implants, are designed to achieve excellent osseointegration of the implants.



Designed for Platform switching

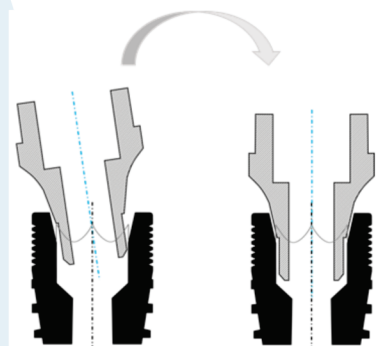
The Implant- Abutment conical connection apart from providing robust tightly secured sealed connection, also provides benefits of platform switching. The platform switch is enabled by the implant abutment connection interface diameter being lower than the implant external diameter at the cortex. Abutment emerges as a cone at the connection and allows space for the Gingival seal to extend all the way around the implant aiding in the reduction of crestal bone loss. In addition to this the machined collar significantly reduces chances of implant marginal bone loss and enhances the healing process, reducing chance of peri-implantitis.

Designed for Robust connections

Conical connection between Implant and abutment ensures self-centering, and better load resolution. The fit between the hexagonal slot of the Implant and Abutment, and the depth of engagement ensures very repeatable orientation and a strong connection. These features offer twin advantages

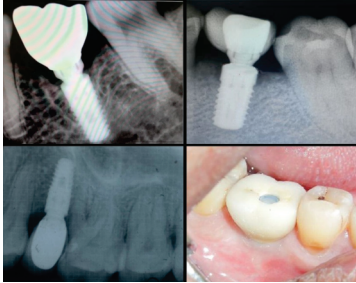
- A tight and predictable fit of the abutment ensures excellent transfer of masticatory load to the implant and through the implant, to the bone.
- Accurate and repeatable repositioning of Impression coping and abutment.

In addition, the proper centering and aligning of the abutment and implant allows the fixation screw to fix both together, with minimal lateral stresses reducing chances of screw failures.



Self aligning due to Conical Connection

Designed for Ease of Placement



- Sharper apical threads allow easier implant entry in the cancellous bone even with smaller drill sizes, allowing easier placement and hence retaining vital bone around the implant .
- Smaller drill sizes allow for lesser bone removal, and allowing smaller defects to be filled during the healing and final osseointegration.
- The Hybrid Tapered design allows for easy implant placement with minimal bone removal, allowing for maximum bone support and early stabilization .

Designed for a comfortable experience



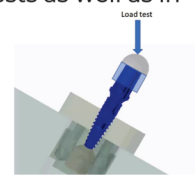
- The unique packaging design of the implant and cover screw, along with the driver tools renders itself for easy pick and place from the packaging to the osteotomy site.
- The surgical kit offers a comprehensive choice of tools to make your surgical procedure a smooth experience.
- A variety of prosthetic options are designed and developed to assist in catering for the diverse patient requirements to provide them with world class prosthetic solutions.
- Furthermore, with advanced manufacturing being rooted in India our flexible and responsive supply chain will ensure availability of components on time as needed.

Designed and Tested for Trust

The product has undergone a rigorous design iteration process and has converged to this optimal design with a desirable balance between the requisite features thus offering simultaneously "Ease of entry", "High stability" with maximum bone in contact, and "Robust and repeatable fit" with prosthetic components.

The product has passed through testing both in house benchmarking tests as well as in external testing facilities in India and Germany.

- Extensive Animal studies have shown Osseo-integration and a high removal torque
- Lab studies have shown high load bearing capacities
- Finite Element Analysis studies have shown optimal distribution of load



All these extensive studies have proven the safety & performance of the implant – abutment system. This enables the clinician to place ReFirm implants with peace of mind and maintain the trust of the patients in the Doctor.

Product Information

Implant-abutment & Accessories

Implant



Dia (mm) / Length (mm)	Ø 3.5	Ø 4.0	Ø 4.5	Ø 5.0	Ø 5.5
8.5	11R-IM-XR001	11R-IM-XR006	11R-IM-XR011	11R-IM-XR016	11R-IM-XR021
10	11R-IM-XR002	11R-IM-XR007	11R-IM-XR012	11R-IM-XR017	11R-IM-XR022
11.5	11R-IM-XR003	11R-IM-XR008	11R-IM-XR013	11R-IM-XR018	11R-IM-XR023
13	11R-IM-XR004	11R-IM-XR009	11R-IM-XR014	11R-IM-XR019	11R-IM-XR024
15	11R-IM-XR005	11R-IM-XR010	11R-IM-XR015	11R-IM-XR020	



Straight Abutment

Dia (mm) / Collar Height (mm)	Ø 4.2	Ø 4.5	Ø 5.2	Ø 5.7	Ø 6.5
2.2	11R-AS-XR001	11R-AS-XR002	11R-AS-XR003	11R-AS-XR004	11R-AS-XR005
3.0	11R-AS-XR006	11R-AS-XR007	11R-AS-XR008	11R-AS-XR009	11R-AS-XR010
4.0	11R-AS-XR011	11R-AS-XR012	11R-AS-XR013	11R-AS-XR014	11R-AS-XR015



Angular Abutment

Angle (degree)	15	25
Collar Height (mm)	3.0	3.0
Collar Diameter (mm)	Ø4.5	Ø4.5
Product Code	11R-AA-XR001	11R-AA-XR002



Locator Abutment

Product Code	11R-AL-XR005
--------------	--------------

Castable Abutment

Product code	Description	Length (mm)	Collar diameter (mm)	Collar height (mm)
11R-AC-XR001	Ti base with Hex	11.5	Ø 4.5	2.2
11R-AC-XR002	Fully Castable with Hex	11.5	Ø 4.5	2.2
11R-AC-XR003	Ti base without Hex	11.5	Ø 4.5	2.2
11R-AC-XR006	Ti base without Hex	13	Ø 4.5	2.2
11R-AC-XR004	Fully Castable without Hex	11.5	Ø 4.5	2.2



Implant Analog

Product Code	11R-LA-XR001
--------------	--------------

Open



Closed



Impression Coping

Product Code	Description
11R-LC-XR009	Impression Coping-Open tray
11R-LC-XR006	Impression Coping-Open tray-long
11R-LC-XR007	Impression Coping-Closed tray-short
11R-LC-XR008	Impression Coping-Closed tray-long



Healing / Cover Screw

Product Code	11R-SH-XR001
--------------	--------------

Healing Abutment



Dia (mm) / Collar Height (mm)	Ø 4.2	Ø 4.5	Ø 5.2	Ø 5.7	Ø 6.5
2.2	11R-AH-XR001	11R-AH-XR004	11R-AH-XR007	11R-AH-XR010	11R-AH-XR013
3.0	11R-AH-XR002	11R-AH-XR005	11R-AH-XR008	11R-AH-XR011	11R-AH-XR014
4.0	11R-AH-XR003	11R-AH-XR006	11R-AH-XR009	11R-AH-XR012	11R-AH-XR015
5.0	11R-AH-XR016	11R-AH-XR018	11R-AH-XR020		
6.0	11R-AH-XR017	11R-AH-XR019	11R-AH-XR021		



Abutment Locking Screw

Product Code	11R-SL-XR001
--------------	--------------

Multi-unit Abutment & Accessories

Straight Multi-unit



Dia (mm) / Collar Height (mm)	Ø4.5
2.2	11R-MS-XR004
3.0	11R-MS-XR005
4.0	11R-MS-XR006

17° Angular Multi-unit

Dia (mm) / Collar Height (mm)	Ø4.5
3.5	11R-MA-XR002
4.5	11R-MA-XR003



30° Angular Multi-unit

Dia (mm) / Collar Height (mm)	Ø4.5
3.5	11R-MA-XR007
4.5	11R-MA-XR008

Collar Diameter (mm)	Product Code	Description
Ø4.5	11R-AL-XR001	Multi-Unit Ti Cylinder
Ø4.5	11R-AL-XR003	Multi-Unit Ti Base
Ø4.5	11R-AL-XR008	Multi-Unit fully castable cylinder

Multi-unit Prosthetic Screw

Product Code	11R-SL-MR001
--------------	--------------

Multi-unit Abutment screw

Product Code	11R-SL-MR002
--------------	--------------

Multi-unit Analog

Collar Diameter (mm)	Product Code
Ø4.5	11R-LA-XR002

Multi - Unit Healing Cap

Collar Diameter (mm)	Product Code
Ø4.5	11R-MA-HR002

Multi-unit Impression Coping

Diameter (mm)	Product Code	Description
Ø4.5	11R-LC-XR002	Multi-unit Impression Coping - Open Tray
	11R-LC-XR004	Multi-unit Impression Coping - Closed Tray

Refirm Surgical Kit - Elite 11R-TK-XR001



Refirm Surgical Kit - Compact 11R-TK-XR002



Refirm Surgical Kit - Prime 11R-TK-XR003



Individual parts in the kit will also be available separately. Refer catalogue for details.

CDSO M. L : MFG/MD/2020/000134
ISO 13485:2016 Certified Company